

## Registration

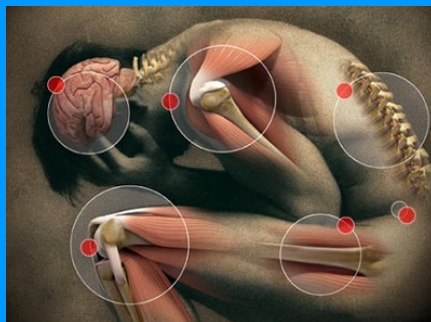
- ◆ Please register online at <http://www.nyschp.org> by April 1, 2010. You may link to the conference website directly from the NYSCHP home page. The fee for this program is \$350 for members and NYS ACCP members (call NYSCHP to register at 518-456-8819) unless you are an NYSCHP member; \$450 for non members, 20% off for any institution that registers 2 or more people. We reserve the right to cancel or change locations of the seminar due to insufficient registration; registrants will be notified and receive a full refund for cancellation.
- ◆ Cancellations received 60 days prior to each program may request a 90% refund. Paid registrants who fail to attend the live program will receive the 5 hours home-study certificate of completion when they turn their test in. Participants must receive 70% or higher scores on home-study test in order to receive a certificate of completion. 15 contact hours or 1.5 CEUS.
- ◆ Home study information will be sent to registrants by March 31, 2010. The registration fee includes CE statements of credit and a formal pain management certificate of completion.

NYSCHP  
2 Pine West Plaza, Suite 203, Washington Ave  
Extension, Albany, NY 12205 Phone: (518)  
456-8819 E-mail: [dfeinberg@nyschp.org](mailto:dfeinberg@nyschp.org)



## NYSCHP

### Pain Management Practice Based Certificate Program



#### LOCATION

Saratoga Hilton  
Saratoga Springs, NY

May 7, 2010

May 8, 2010

7:45 AM—12 NOON,  
1 PM—4 PM

2 PM - 5 PM

#### Sponsors

NYSCHP would like to thank the following  
sponsors for their support of this program.

GNVHA Services Inc., Pricara, Division of Ortho-McNeil-Janssen Pharmaceuticals, Inc. administered by Ortho-McNeil Janssen Scientific Affairs, Inc., King Pharmaceuticals, Inc.

## Goals of The Program

The home study training will address an overview of evidence-based pain management programs; optimizing chronic pain management; palliative care for the terminally ill drug addict; interface between pain and drug abuse and the evolution of strategies to optimize pain management while minimizing drug abuse; fibromyalgia therapy; chronic nonmalignant pain in primary care; pain management in the hospitalized patient and peripheral neuropathy. Participants will have four (4) weeks to complete the required readings and open book post-test. The post-test will be collected at the live component of this program on May 7, 2010. The home study portion must be completed in order to participate in the live program. The participant must score at least 70% on an open book post-test. Pharmacists will receive CE credits for this component that total 5 hours or 0.5 CEUs.

The live program involves 10 hours (1.0 CEUs) of both lecture and hands-on training in a workshop setting and use of an audience response system. Participants will review and discuss pain overview with an understanding of pain types, syndromes, distinction between chronic and acute pain, the pathophysiology of pain (nociceptive, neuropathic), general overview of electro diagnostic tools, utilization of imaging reports, recognition of lack of clear connection between imaging and symptomatology, general overview of treatment options to be considered (non-invasive, interventional, medication management), therapeutics of opioid; geriatric considerations and neurology. The program will conclude with Pain Management Jeopardy utilizing an audience response system. At the conclusion of the live program, an open-book final exam must be completed with a score of at least 70% correct responses. Pharmacists will receive a total of 10 hours or 1.0 CEUs for completion of this part.

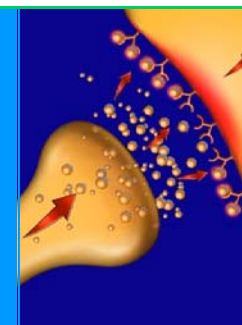
## Faculty Speakers:

**Jeffrey Fudin, BS, PharmD**  
Diplomate, American Academy of Pain Management  
CEO, NovaPain (Located at [www.PainDr.com](http://www.PainDr.com)), Clinical Pharmacy Specialist, Pain Management, VAMC, Albany, NY  
Adjunct Associate Professor of Pharmacy Practice, Albany College of Pharmacy & Health Sciences, Albany, NY

**James Otis, MD, FAAN, FAAPM**  
Director Pain Management, & Clinical Services Director, Neurology Consultation Service, Boston Medical Center, Boston, MA  
Associate Professor Neurology, Boston University School of Medicine, Boston, MA

**Steven Passik, PhD**  
Memorial Sloan Kettering Cancer Center, Dept of Psychiatry and Behavioral Sciences, New York, NY

**Steve Levy, BS, PharmD, BCPS, CGP**  
Clinical Pharmacy Specialist Internal Medicine & Geriatrics, Kingsbrook Jewish Medical Center, Brooklyn, NY



## Course Outline



### PART 1 – HOME STUDY TRAINING (5 HOURS HOME-STUDY: 0.5 CEUs) #0134-0000-10-034-H01-P

McCarberg B, Bainbridge JL, Fudin J. Optimizing chronic pain management: integrating pharmacokinetics and pharmacodynamics. *Clinical Courier*. 2009, 27 (3): 1-8. (JF)

Kirsh, K, Passik SD. Palliative Care of the Terminally Ill Drug Addict. *Cancer Investigation*. 2006, 24:425-431.

Kirsh, K, Passik SD. The Interface Between Pain and Drug Abuse and the Evolution of Strategies to Optimize Pain Management While Minimizing Drug Abuse. *Experimental and Clinical Psychopharmacology*. 2008, 16(5):400-404.

Abeles M, Solitar BM, Pillinger MH, Abeles AM. Update on Fibromyalgia Therapy. *The American Journal of Medicine*. 2008,121:555-561.

Jackman RP, Purvis JM, Mallett BS. Chronic Nonmalignant Pain in Primary Care. *Am Fam Physician*. 2008,78(10):1155-1162,1164.

Li Joseph MW. Pain Management in the Hospitalized Patient. *Med Clin N Am*. 2008, 92:371-385.

Pascuzzi RM. Peripheral Neuropathy. *Med Clin N Am*. 2009, 93:317-342.

Ferrell B, Argoff CE, Epplin J, Gloth M, Herr K, Katx JD, Mehr DR, Reisner L. Pharmacological Management of Persistent Pain in Older Persons. *JAGS*. 2009, 57:1331-1346.

The home study training will address an overview of evidence-based pain management programs: optimizing chronic pain management; palliative care for the terminally ill drug addict; interface between pain and drug abuse and the evolution of strategies to optimize pain management while minimizing drug

abuse; fibromyalgia therapy; chronic nonmalignant pain in primary care; pain management in the hospitalized patient and peripheral neuropathy. Participants will have four (4) weeks to complete the required readings and open book post-test. The post-test will be collected at the live component of this program on May 7, 2010. The home study portion must be completed in order to participate in the live program. The participant must score at least 70% on an open book post-test. Pharmacists will receive CE credits for this component that total 5 hours or 0.5 CEUs.

#### Learning Objectives:

- Differentiate among addiction, pseudoaddiction, physical dependence, and tolerance in the terminally ill patient.
- Describe important considerations in the differential diagnosis for a terminally ill patient with a previous or current history of addiction.
- Develop a treatment plan for an addicted terminally ill patient.
- Describe the role of a pharmacist in the management of a patient's chronic pain.
- Discuss the pros and cons as they relate to the understatement of chronic pain by health care providers and patients.
- Define "rational polypharmacy" and the relevance of pharmacokinetics/pharmacodynamics to "rational polypharmacy".
- List the medications available for the treatment of chronic pain.
- Identify the impact of pharmacokinetic/pharmacodynamics on formulary substitution.
- Describe the role of a Hospitalist in the pain management of a hospitalized patient.
- Develop a treatment plan for treating pain in the elderly.
- List the pharmacologic and nonpharmacologic therapies available to treat pain in the hospitalized patient.
- Differentiate the approach to pain management comparing the elderly to a younger people.
- Compare and contrast the medications recommended for treatment of older adults with persistent pain.
- List the risks and benefits of long term use of opioid therapy for pain management in the elderly.
- List the most commonly diagnosed diseases among patients presenting with peripheral neuropathy and other neuropathic pain syndromes.
- Define "neuropathic pain".
- List the pharmacological agents used for the treatment of fibromyalgia.
- List the non-pharmacological interventions utilized in the treatment of fibromyalgia.

### PART 2 – LIVE PROGRAM TRAINING (10 Hours 1.0 CEUs) #0134-0000-10-035-L01-P

The live program involves 10 hours (1.0 CEUs) of both lecture and hands-on training in a workshop setting with the use of an audience response system. Pain overview with an understanding of pain types, syndromes, distinction between chronic and acute pain, the pathophysiology of pain (nociceptive, neuropathic), general overview of electro diagnostic tools, utilization of imaging reports, recognition of lack of clear connection between imaging and symptomatology, general overview of treatment options to be considered (non-invasive, interventional, medication management), therapeutics of opioid; geriatric considerations and neurology. The program will conclude with Pain Management Jeopardy utilizing an audience response system. At the conclusion of the live program, an open-book final exam must be completed with a score of at least 70% correct responses. Pharmacists will receive a total of 10 hours or 1.0 CEUs for completion of this part.

#### Learning Objectives:

- Define the physiologic changes in the elderly that increase the risk of morbidity and mortality.
- Identify strategies to maximize safe medication use in the elderly.
- Learn the classification of the main pain types.
- Discuss the diagnostic modalities for back and neck pain and neuropathic pain, their indications and limitations.
- Review the physiology of neuropathic pain.
- Differentiate between chronic and acute pain.
- Compare and contrast various pharmacological and chemical classes of opioids.
- State the prevalence and trends in prescription drug abuse.
- Design a treatment strategy commensurate with assessed risk.
- Discuss how pain management, both acute (e.g. post-op) and chronic/progressive varies in the in-patient and/or ICU setting versus the outpatient setting.
- Differentiate between physical dependence and tolerance and how these terms apply in the treatment of acute and chronic pain and for a terminally ill patients.

### Pain Management Practice Based Certificate Program:

In order to receive your certificate of completion you must successfully complete both parts of the pain management program. The steps need to be completed in succession as you will be unable to participate in the live program without first completing the home study program. Formal certificates will be mailed upon successful completion of the program in its entirety.

#### Continuing Education Credit

*The New York State Council of Health-system Pharmacists is accredited by the Accreditation Council for Pharmacy Education as a provider of continuing pharmacy education*



Pharmacists will receive a total of 15 hours of continuing education credit (1.50 CEUs) upon completion of this seminar.

**DIDACTIC HOME-STUDY COMPONENT:** ACPE #0134-000-10-034-H01-P (5 hrs. or 0.5 CEUs)

**LIVE PROGRAM COMPONENT:** ACPE #0134-000-10-035-L01-P (10 hrs. or 1.0 CEUs)

**Certificate of completion:** ACPE # 0134-0003

nyschp

**Grievance Policy :** All grievances regarding courses, personnel or practices at any continuing pharmacy education program should be brought to the attention of the Program Administrator/Executive Director. Every attempt will be made to satisfy the complainant. In addition, measures shall be taken to correct deficiencies. Those program participants who wish to appeal their participation at a program should address such an appeal in writing to the Program Administrator/Executive Director, Arizona Pharmacy Alliance within 10 working days of the program. The Program Administrator will convene an appeal process committee consisting of the members of the CE Committee within 30 days after the filing of the appeal. The written results of the appeal will be shared with the participant within two weeks following the committee meeting.